

CERTIFICATE OF LOCATION OF GOVERNMENT CORNER

EAST QUARTER _____ Corner of Section 2 , Township 108N , Range 39W

5th Principal Meridian, State of Minnesota, County of MURRAY

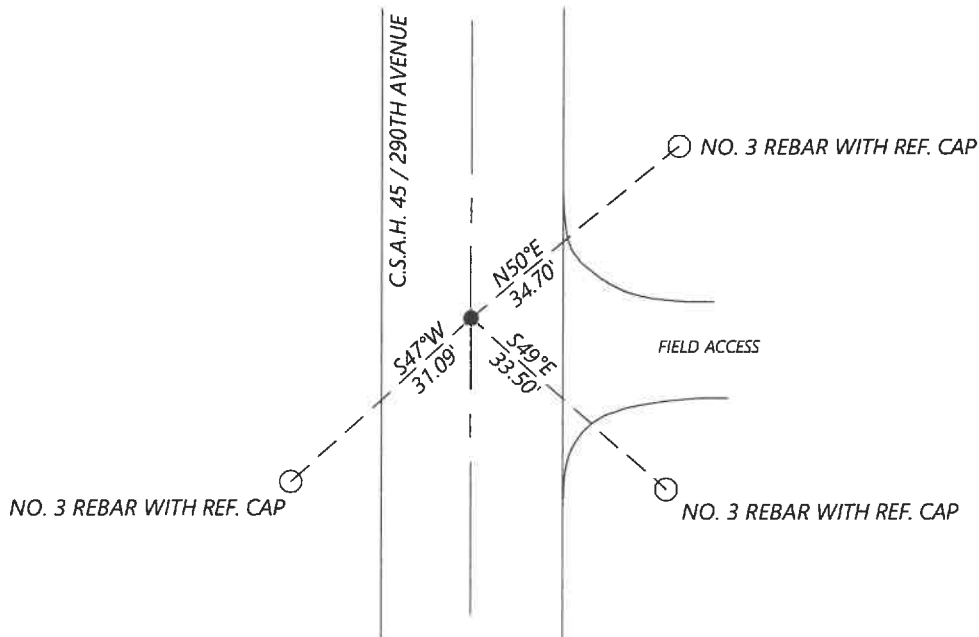
At the corner location shown on the sketch:

On 09/14/2020 found a PK NAIL FLUSH WITH GRADE
DATE

left monument as found lowered monument removed monument (explain)

On _____ placed a _____
DATE

SKETCH OF REFERENCE TIES



N.T.S.

Statement of evidence for this corner location is on back of this page.

I hereby certify that this document was researched and prepared by me or under my direct supervision and that I am a licensed Land Surveyor under the laws of the State of Minnesota.

Signature *John Jones*

Date 6/17/2021 License No. 45874

Title:

Land Surveyor Professional Engineer

County Surveyor County Engineer

OFFICE OF THE COUNTY RECORDER

County of Murray

I hereby certify that this document was filed in the Co.

Recorder's office at _____ M. on the _____ day of _____ A.D. 20 _____

County Recorder *Karen Brown*

by JUN 22 2021, Deputy

DOCUMENT NO. _____

Statement of Evidence:

East Quarter Corner of Section 2, Township 108 North, Range 39 West, 5th Principal Meridian, Murray County, Minnesota.

1861 July, GLO Notes: Set post on mound.

1901 June, Survey record for Section 1 shows that the government corner was found. A distance of 2549.5ft is shown to the Northwest corner and 2644.5ft is shown to the Southwest corner.

1974 October, Murray County Highway Department records show that they located a field stone and placed a steel pin above it.

Nail & cap in post	NW	49.78ft
Nail & cap in corner post	E	50.34ft
Nail & cap in brace post	NE	52.12ft

2003 Road plans for CSAH 45 show the corner was assumed at PI station 340+20.15
Coordinates: N: 224380.12 E: 574453.47

2004 A survey in Section 1 by Lyle Moseng shows a found PK nail at the corner.
Coordinates: N: 224379.88 E: 574453.48

2020 September, Westwood Professional Services searched and found a PK nail. Coordinates fit the Moseng survey. I accepted it as the corner and set reference ties.

Analysis of the recovered data, field evidence and survey measurements, indicates that the monument found is the correct perpetuation of this corner. For additional information concerning this corner please contact Westwood Professional Services.